

CE
 GARMEL ENGINEERING GROUP
 1000 W. 10th Street, Suite 100
 Springfield, MA 01102
 Telephone: (417) 833-1111
 Fax: (417) 833-1112

SPRINGFIELD
PARK PLACE
 COMMONWEALTH

DATE: 11/11/94
 DRAWN BY: J. GOLDSTEIN
 CHECKED BY: J. GOLDSTEIN
 APPROVED BY: J. GOLDSTEIN

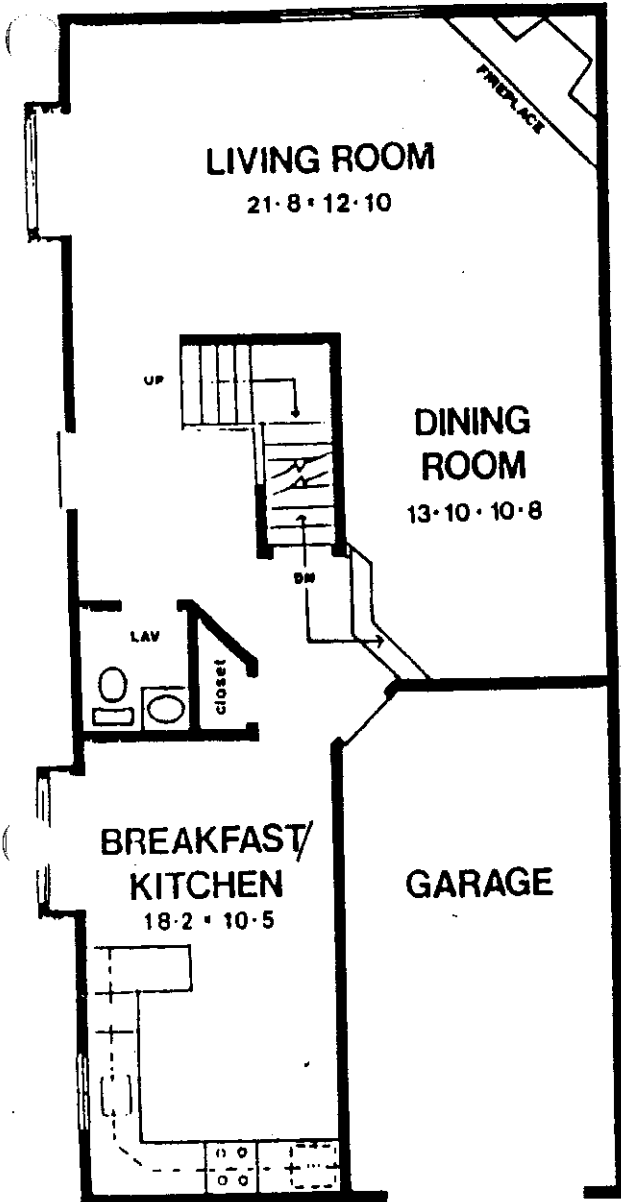
■ Hatched: Limited Common Elements
 ■ Stippled: Limited Common Elements
 ■ Dotted: Limited Common Elements
 ■ Solid: Limited Common Elements
 ■ Blank: Common Areas and Landscaping to be Installed in Accordance with the Final Plan

DB3552-0775

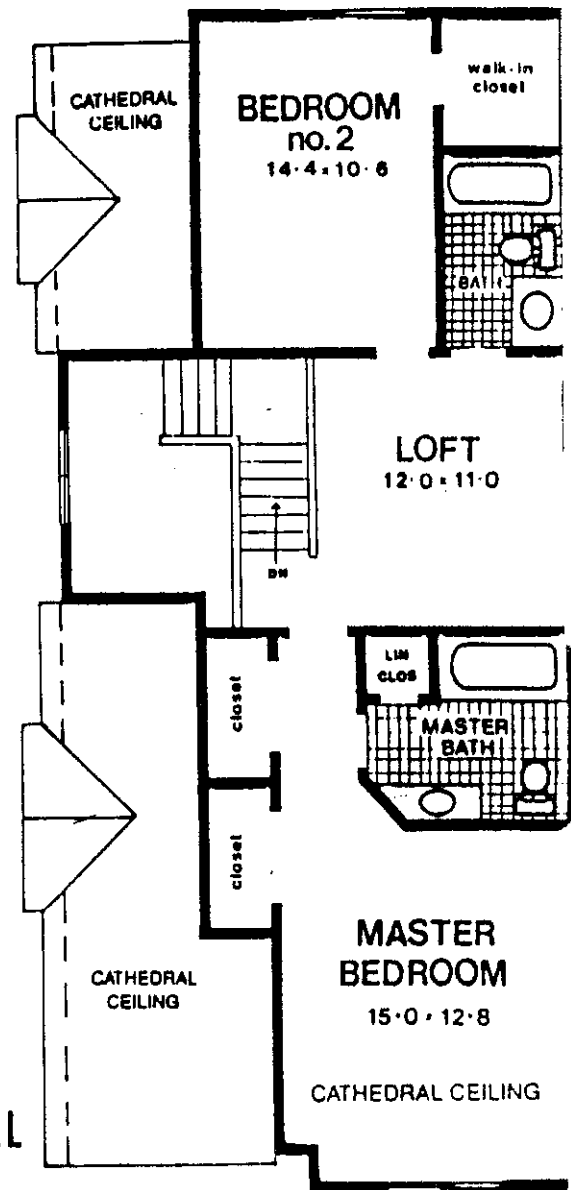
EXHIBIT 1C
FLOOR PLANS

DB3552-0776

UNIT A



LOWER LEVEL



UPPER LEVEL

SPRINGFIELD PARK PLACE CO.
A CONDOMINIUM

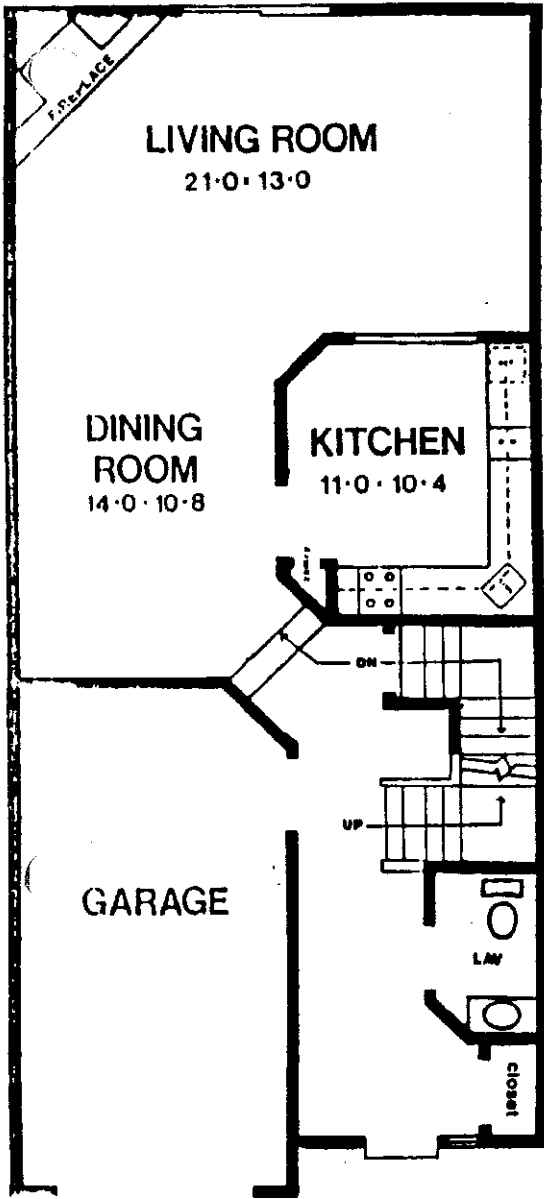
FLOOR PLAN UNIT "A"

All Dimensions, Positions,
Locations and Elevations
Detail are Approximate

Don Zdanowski, AIA

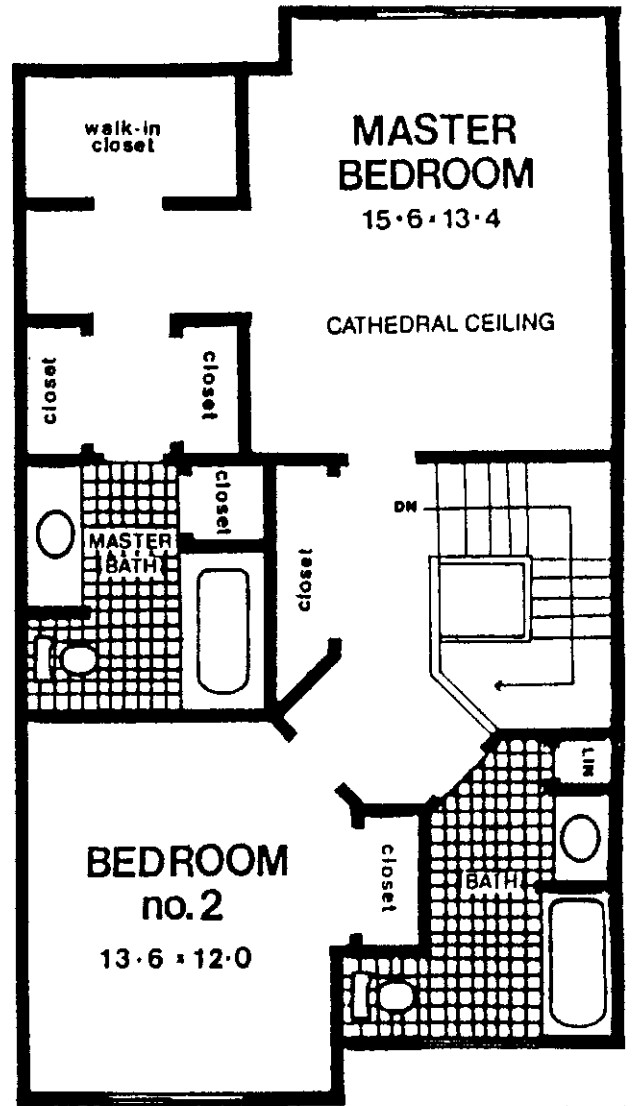
DB3552-0777

UNIT B



LOWER LEVEL

All Dimensions, Positions,
Locations and Elevations
Detail are Approximate



UPPER LEVEL

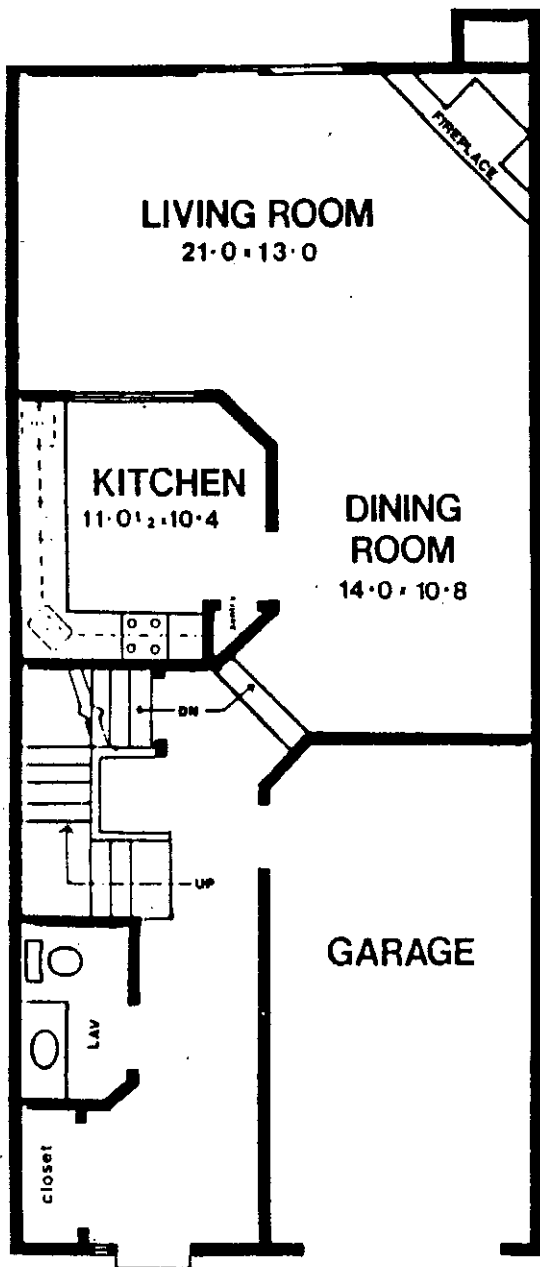
SPRINGFIELD PARK PLACE CO.
A CONDOMINIUM

FLOOR PLAN UNIT "B"

Don Zdanowski, AIA

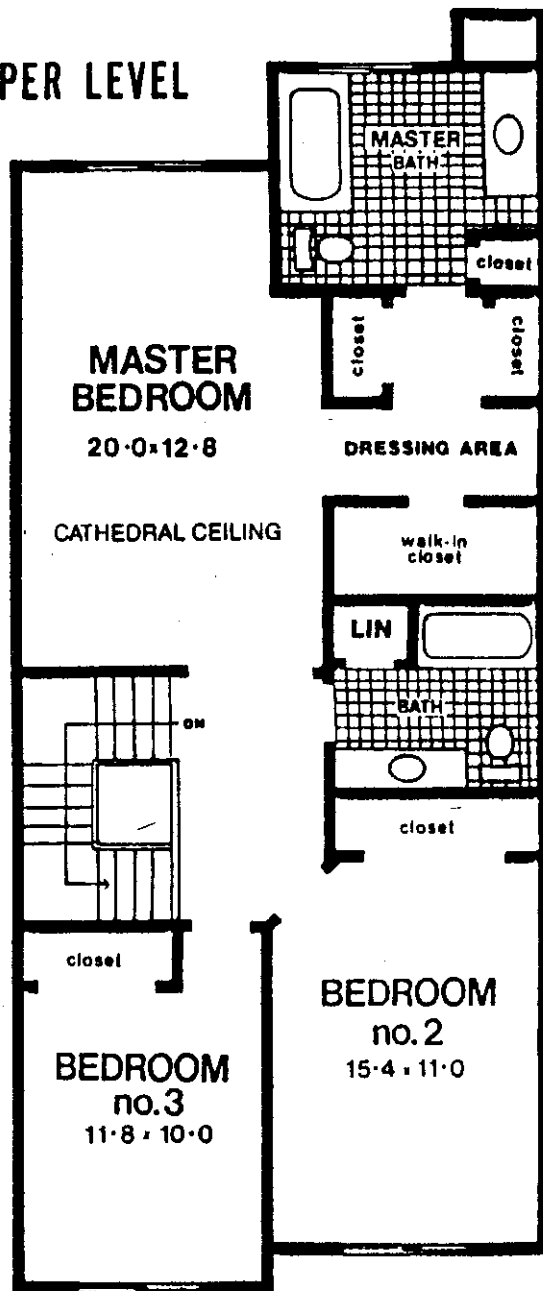
DB3552-0778

UNIT C



LOWER LEVEL

UPPER LEVEL



SPRINGFIELD PARK PLACE CO.
A CONDOMINIUM

FLOOR PLAN UNIT "C"

Don Zdanowski, AIA

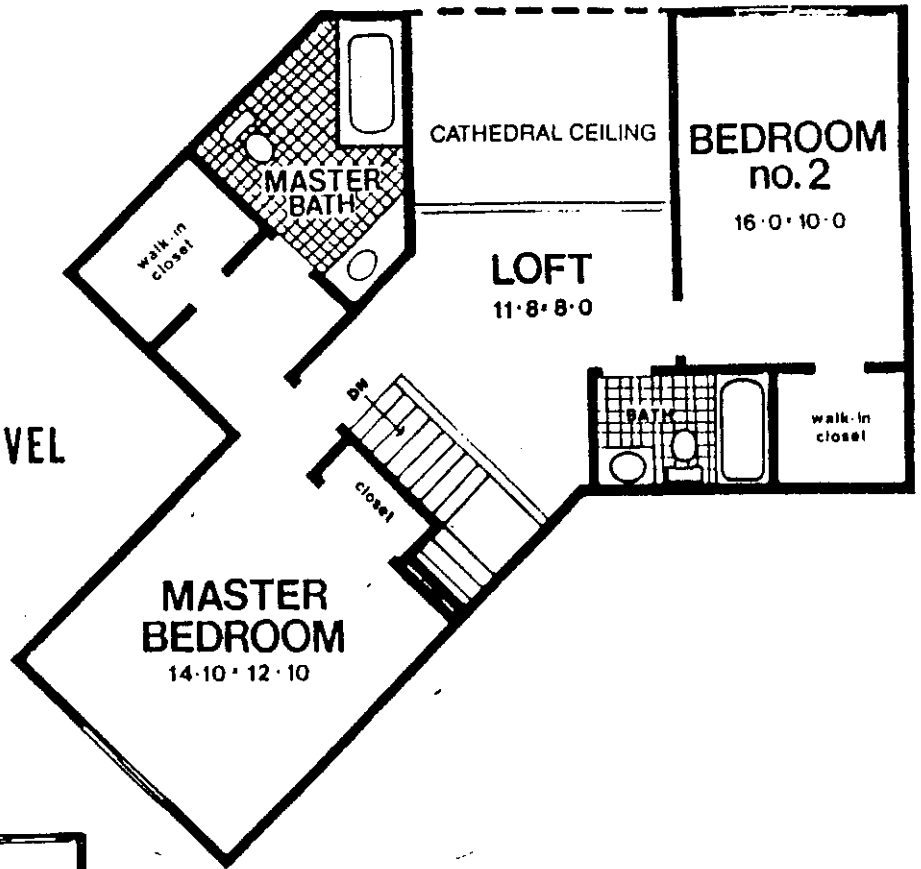
All Dimensions, Positions,
Locations and Elevations
Detail are Approximate

DB3552-0779

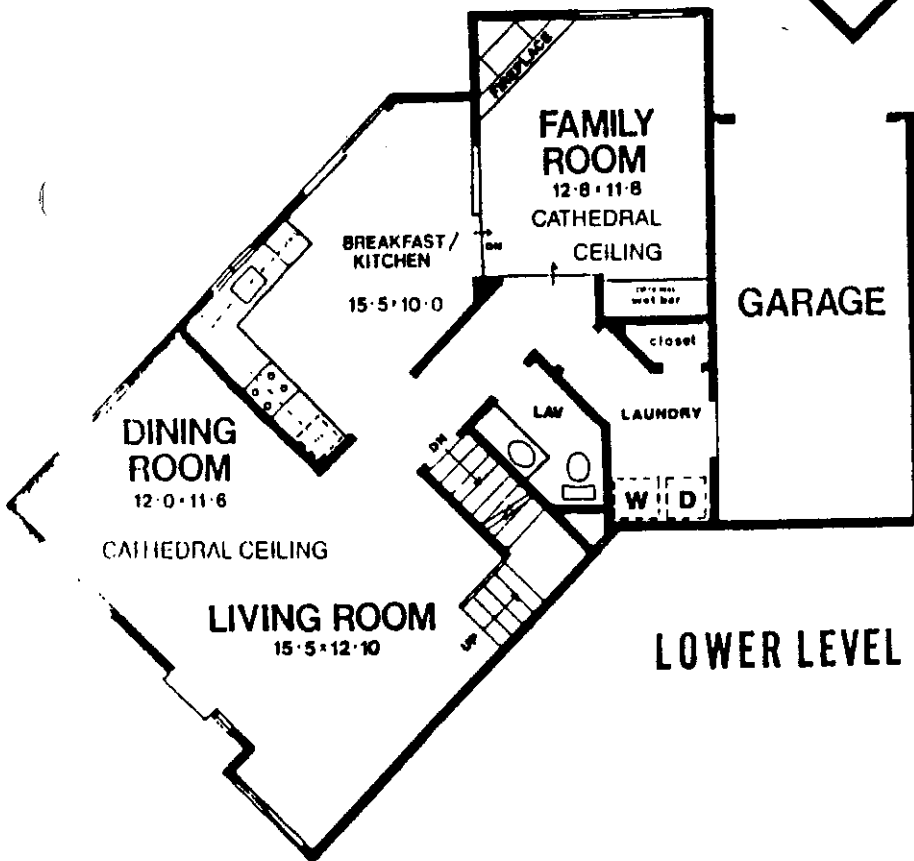
Zov

UNIT C-A

UPPER LEVEL



LOWER LEVEL



SPRINGFIELD PARK PLACE CO.
A CONDOMINIUM

FLOOR PLAN UNIT " C - A "

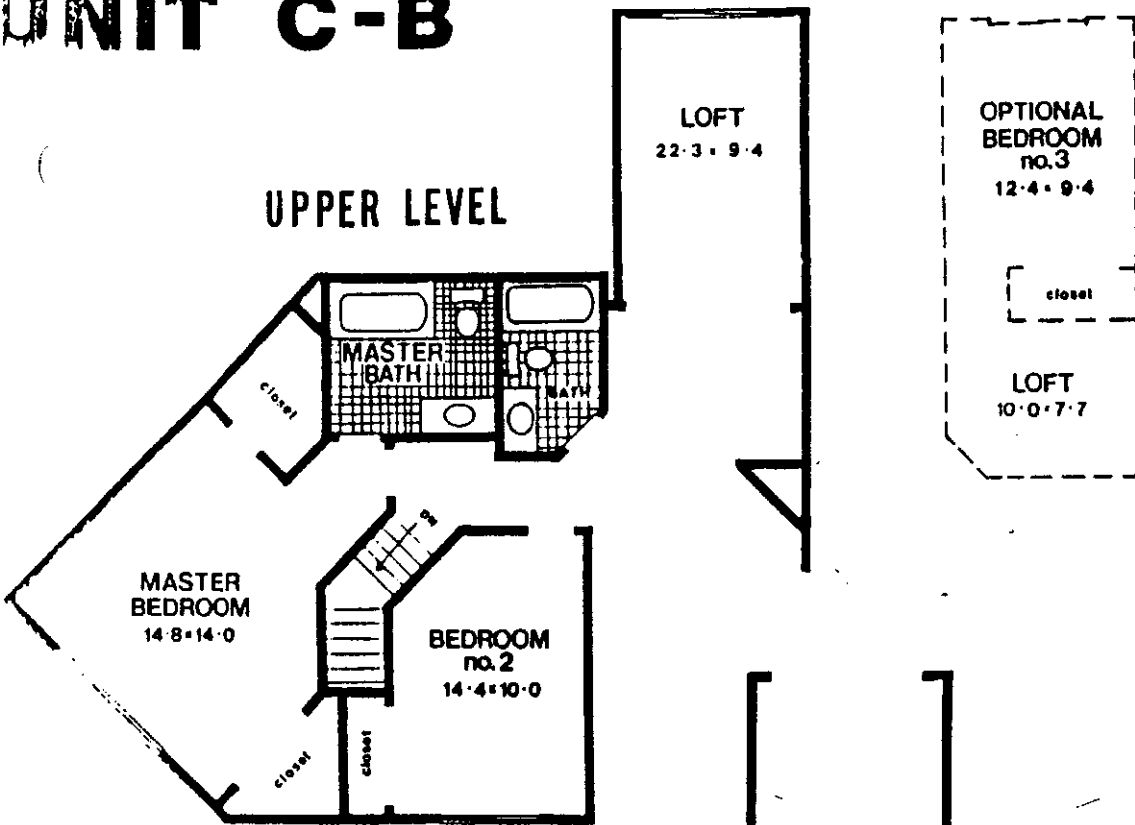
Don Zdanowski, AIA

All Dimensions, Positions,
Locations and Elevations
Detail are Approximate

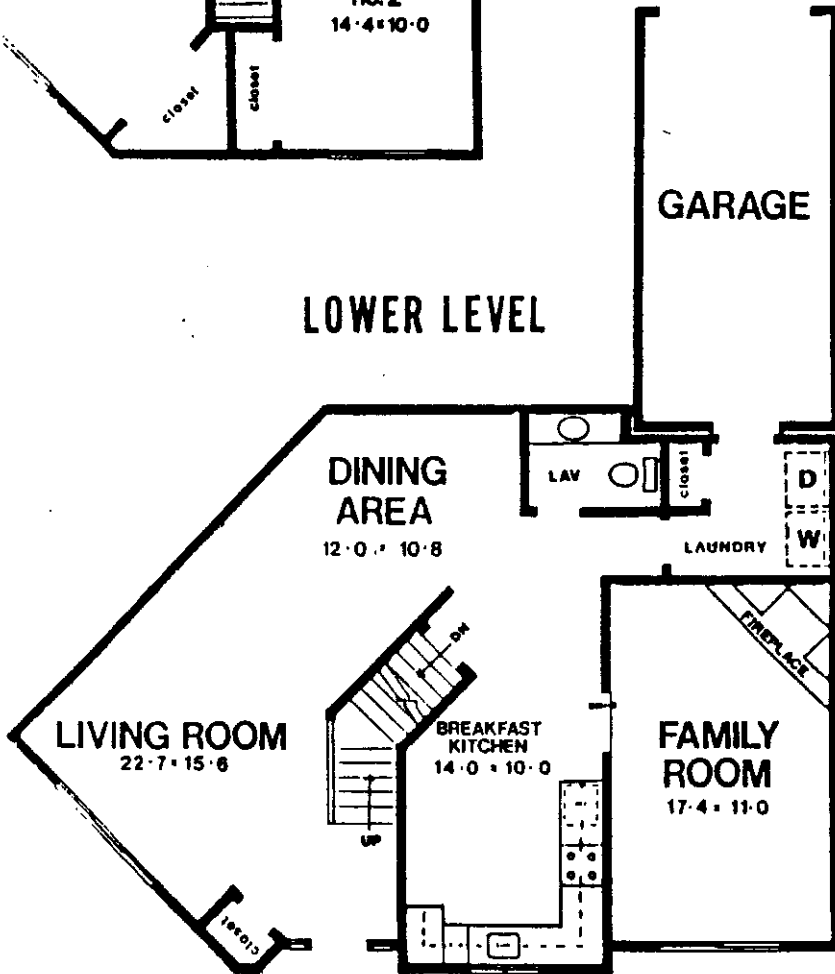
DB3552-0781

UNIT C-B

UPPER LEVEL



LOWER LEVEL



SPRINGFIELD PARK PLACE CO.
A CONDOMINIUM

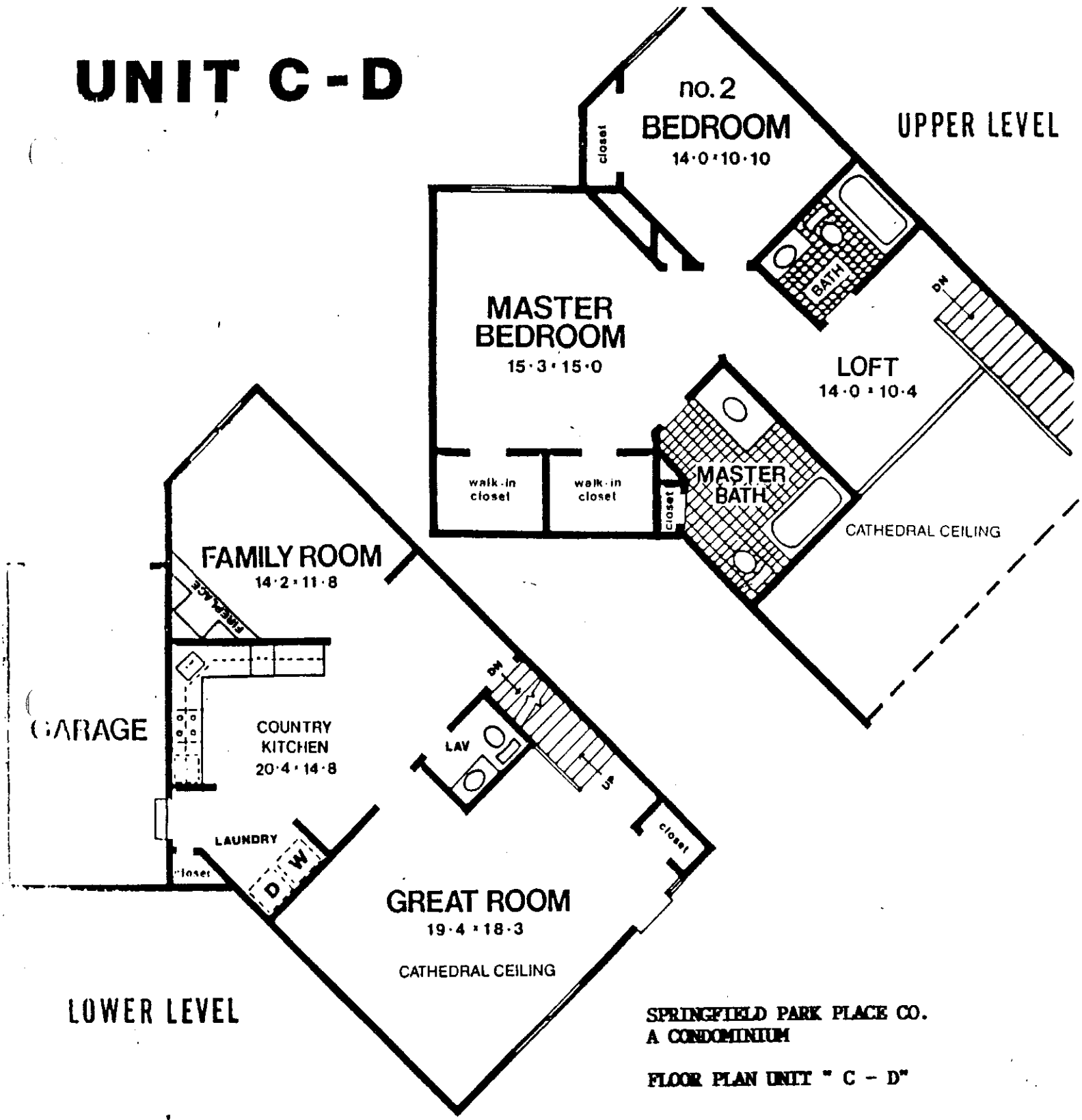
FLOOR PLAN UNIT " C - B "

Don Zdanowski, AIA

All Dimensions, Positions,
Locations and Elevations
Detail are Approximate

DB3552-0782

UNIT C-D



LOWER LEVEL

SPRINGFIELD PARK PLACE CO.
A CONDOMINIUM

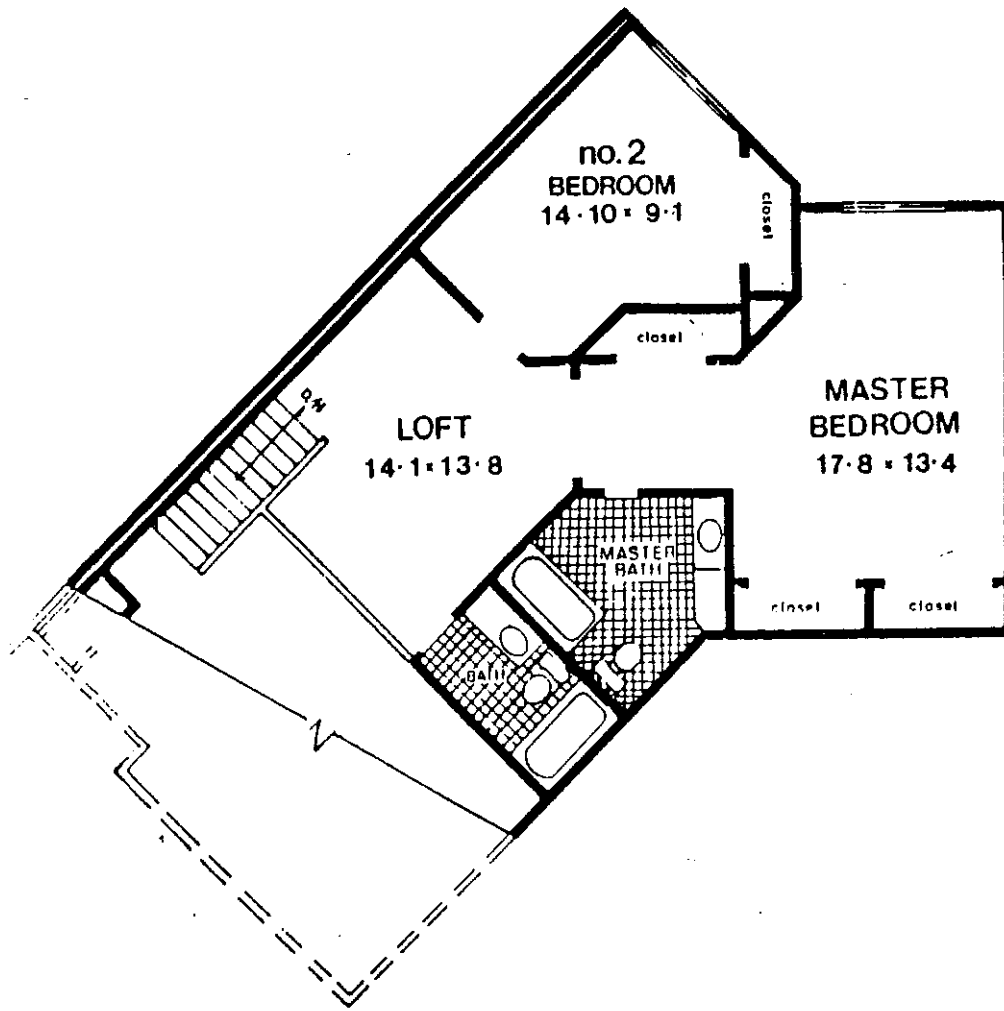
FLOOR PLAN UNIT " C - D "

All Dimensions, Positions,
Locations and Elevations
Detail are Approximate

Don Zdanowski, AIA

DB3552-0783

UNIT C-D



SPRINGFIELD PARK PLACE CO.
A CONDOMINIUM

FLOOR PLAN UNIT " C - D "

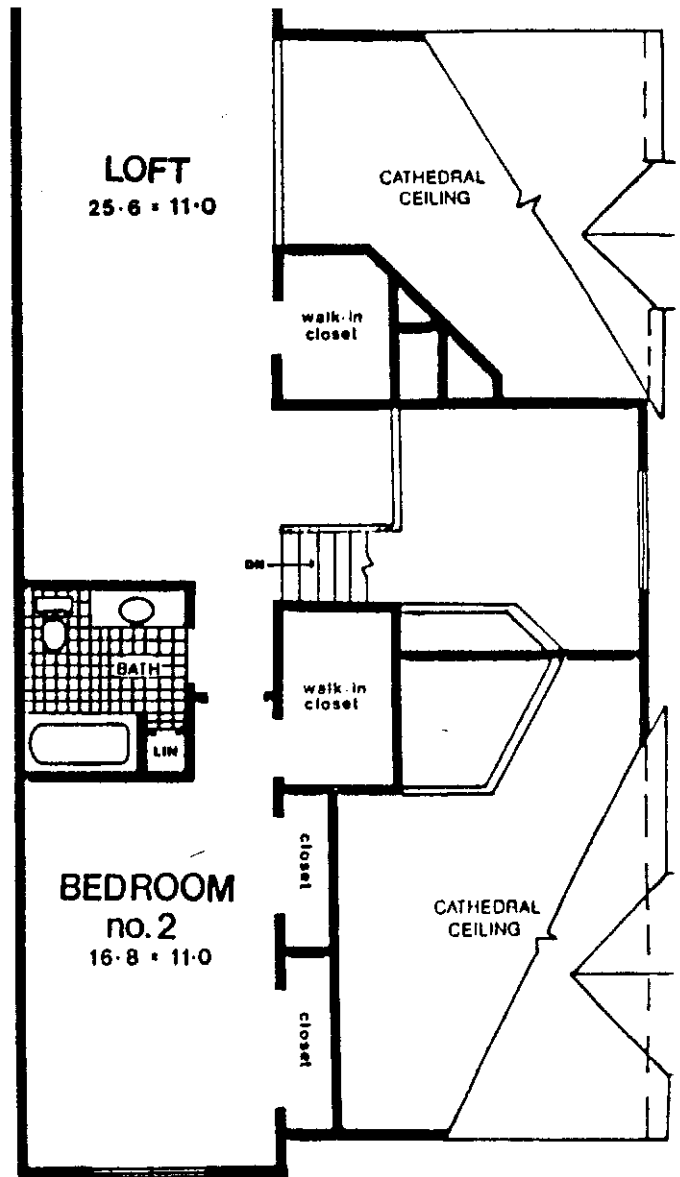
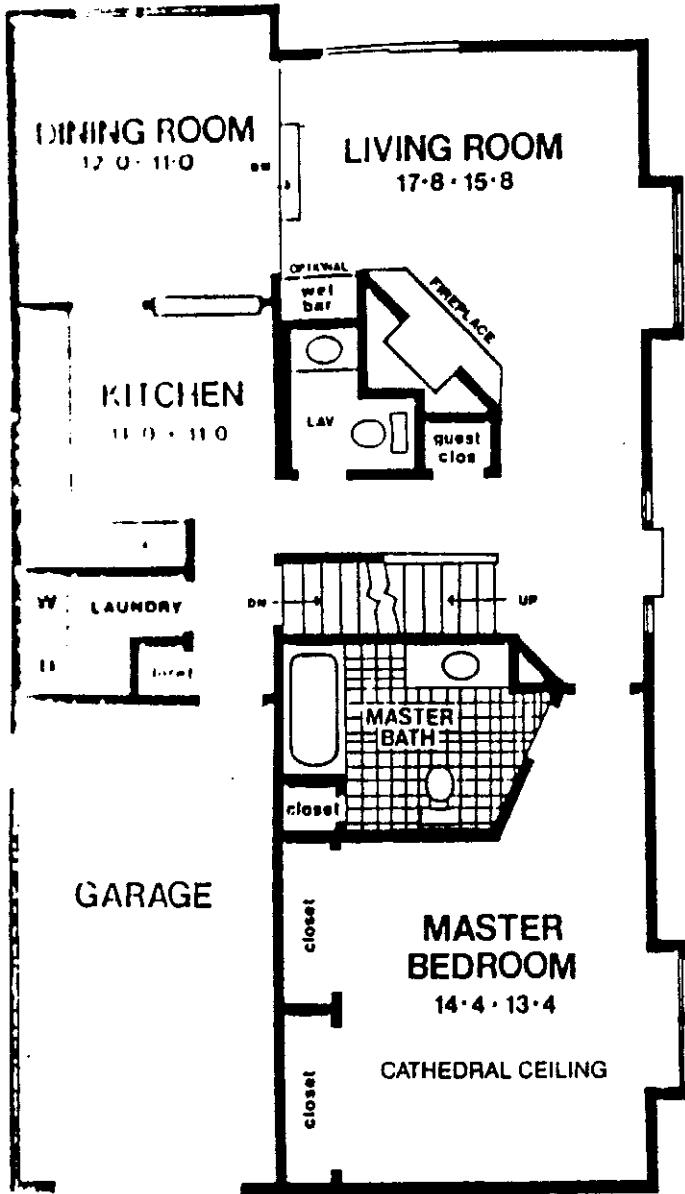
All Dimensions, Positions,
Locations and Elevations
Detail are Approximate

Don Zdanowski, AIA

DB3552-0784

UNIT D

LOWER LEVEL



UPPER LEVEL

SPRINGFIELD PARK PLACE CO.
A CONDOMINIUM

FLOOR PLAN UNIT "D"

All Dimensions, Positions,
Locations and Elevations
Detail are Approximate

Don Zdanowski, AIA

DB3552-0780

EXHIBIT F

PERCENTAGE OF INTEREST SCHEDULE

<u>Unit</u>	<u>Unit Type</u>	<u>Percentage of Interest</u>
101	D	.211%
102	B or C	.201%
103	B or C	.201%
104	B or C	.201%
105	B or C	.201%
106	B or C	.201%
107	D	.211%
201	A	.197%
202	B or C	.201%
203	B or C	.201%
204	B or C	.201%
205	B or C	.201%
206	A	.197%
301	D	.211%
302	B or C	.201%
303	B or C	.201%
304	B or C	.201%
305	B or C	.201%
306	B or C	.201%
307	D	.211%
401	D	.211%
402	B or C	.201%
403	B or C	.201%
404	B or C	.201%
405	B or C	.201%
406	B or C	.201%
407	B or C	.201%
408	B or C	.201%
409	B or C	.201%
410	A	.197%
501	D	.211%
502	B or C	.201%
503	B or C	.201%
504	B or C	.201%
505	B or C	.201%
506	B or C	.201%
507	D	.211%
601	A	.197%
602	B or C	.201%

DB3552-0859

<u>Unit</u>	<u>Unit Type</u>	<u>Percentage of Interest</u>
		.201%
603	B or C	.201%
604	B or C	.201%
605	B or C	.201%
606	B or C	.201%
607	B or C	.201%
608	B or C	.197%
609	A	
		.211%
	D	.201%
701	B or C	.201%
702	B or C	.201%
703	B or C	.201%
704	B or C	.201%
705	B or C	.201%
706	B or C	.201%
707	B or C	.211%
708	D	
		.211%
	D	.201%
801	B or C	.201%
802	B or C	.201%
803	B or C	.201%
804	B or C	.201%
805	B or C	.201%
806	B or C	.211%
807	D	
		.211%
	D	.201%
901	B or C	.201%
902	B or C	.201%
903	B or C	.201%
904	B or C	.201%
905	B or C	.201%
906	B or C	.211%
907	D	
		.211%
	D	.201%
1001	B or C	.201%
1002	B or C	.201%
1003	B or C	.201%
1004	B or C	.201%
1005	B or C	.211%
1006	D	
		.211%
	D	.201%
1101	B or C	.201%
1102	B or C	.201%
1103	B or C	.201%
1104	B or C	.201%
1105	B or C	

<u>Unit</u>	<u>Unit Type</u>	<u>Percentage of Interest</u>
1106	B or C	.201%
1107	B or C	.201%
1108	B or C	.201%
1109	D	.211%
1201	D	.211%
1202	B or C	.201%
1203	B or C	.201%
1204	B or C	.201%
1205	B or C	.201%
1206	B or C	.201%
1207	B or C	.201%
1208	B or C	.201%
1209	B or C	.201%
1210	D	.211%
1301	D	.211%
1302	B or C	.201%
1303	B or C	.201%
1304	B or C	.201%
1305	B or C	.201%
1306	B or C	.201%
1307	B or C	.201%
1308	B or C	.201%
1309	D	.211%
1401	D	.211%
1402	B or C	.201%
1403	B or C	.201%
1404	B or C	.201%
1405	B or C	.201%
1406	B or C	.201%
1407	B or C	.201%
1408	B or C	.201%
1409	D	.211%
1501	D	.211%
1502	B or C	.201%
1503	B or C	.201%
1504	B or C	.201%
1505	B or C	.201%
1506	B or C	.201%
1507	B or C	.201%
1508	B or C	.201%
1509	B or C	.201%
1510	D	.211%

DB3552-0861

<u>Unit</u>	<u>Unit Type</u>	<u>Percentage of Interest</u>
1601	A	.197%
1602	B or C	.201%
1603	B or C	.201%
1604	B or C	.201%
1605	B or C	.201%
1606	A	.197%
1701	D	.211%
1702	B or C	.201%
1703	B or C	.201%
1704	B or C	.201%
1705	B or C	.201%
1706	D	.211%
1801	A	.197%
1802	B or C	.201%
1803	B or C	.201%
1804	B or C	.201%
1805	B or C	.201%
1806	B or C	.201%
1807	B or C	.201%
1808	B or C	.201%
1809	B or C	.201%
1810	A	.197%
1901	D	.211%
1902	B or C	.201%
1903	B or C	.201%
1904	B or C	.201%
1905	B or C	.201%
1906	B or C	.201%
1907	A	.197%
2001	A	.197%
2002	B or C	.201%
2003	B or C	.201%
2004	B or C	.201%
2005	B or C	.201%
2006	B or C	.201%
2007	B or C	.201%
2008	D	.211%
2101	A	.197%
2102	B or C	.201%
2103	B or C	.201%

DB3552-0862

<u>Unit</u>	<u>Unit Type</u>	<u>Percentage of Interest</u>
2104	B or C	.201%
2105	B or C	.201%
2106	B or C	.201%
2107	B or C	.201%
2108	B or C	.201%
2109	B or C	.201%
2110	A	.197%
2201	D	.211%
2202	B or C	.201%
2203	B or C	.201%
2204	B or C	.201%
2205	B or C	.201%
2206	B or C	.201%
2207	B or C	.201%
2208	A	.197%
2301	A	.197%
2302	B or C	.201%
2303	B or C	.201%
2304	B or C	.201%
2305	B or C	.201%
2306	B or C	.201%
2307	D	.211%
2401	A	.197%
2402	B or C	.201%
2403	B or C	.201%
2404	B or C	.201%
2405	B or C	.201%
2406	B or C	.201%
2407	B or C	.201%
2408	B or C	.201%
2409	B or C	.201%
2410	A	.197%
2501	D	.211%
2502	B or C	.201%
2503	B or C	.201%
2504	B or C	.201%
2505	B or C	.201%
2506	B or C	.201%
2507	A	.197%

DB3552-0863

<u>Unit</u>	<u>Unit Type</u>	<u>Percentage of Interest</u>
	C-A	.213%
C101	C-B	.231%
C102	C-C	.231%
C103	C-D	.209%
C104	C-D	.209%
C105	C-C	.231%
C106	C-B	.231%
C107	C-A	.213%
C108	C-A	.213%
C109	C-B	.231%
C110	C-C	.231%
C111	C-D	.209%
C112	C-D	.209%
C113	C-C	.231%
C114	C-B	.231%
C115	C-A	.213%
C116		
C201	C-A	.213%
C202	C-B	.231%
C203	C-C	.231%
C204	C-D	.209%
C205	C-D	.209%
C206	C-C	.231%
C207	C-B	.231%
C208	C-A	.213%
C209	C-A	.213%
C210	C-B	.231%
C211	C-C	.231%
C212	C-D	.209%
C213	C-D	.209%
C214	C-B	.231%
C215	C-C	.231%
C216	C-A	.213%
C301	C-A	.213%
C302	C-C	.231%
C303	C-B	.231%
C304	C-D	.209%
C305	C-D	.209%
C306	C-C	.231%
C307	C-B	.231%
C308	C-A	.213%
C309	C-A	.213%
C310	C-B	.231%
C311	C-C	.231%

DB3552-0864

<u>Unit</u>	<u>Unit Type</u>	<u>Percentage of Interest</u>
C312	C-D	.209%
C313	C-D	.209%
C314	C-C	.231%
C315	C-B	.231%
C316	C-A	.213%
C401	C-A	.213%
C402	C-B	.231%
C403	C-C	.231%
C404	C-D	.209%
C405	C-D	.209%
C406	C-C	.231%
C407	C-B	.231%
C408	C-A	.213%
C409	C-A	.213%
C410	C-B	.231%
C411	C-C	.231%
C412	C-D	.209%
C413	C-D	.209%
C414	C-C	.231%
C415	C-B	.231%
C416	C-A	.213%
C501	C-A	.213%
C502	C-B	.231%
C503	C-C	.231%
C504	C-D	.209%
C505	C-D	.209%
C506	C-C	.231%
C507	C-B	.231%
C508	C-A	.213%
C509	C-A	.213%
C510	C-B	.231%
C511	C-C	.231%
C512	C-D	.209%
C513	C-D	.209%
C514	C-C	.231%
C515	C-B	.231%
C516	C-A	.213%
C601	C-A	.213%
C602	C-B	.231%
C603	C-C	.231%
C604	C-D	.209%
C605	C-D	.209%

DB3552-0865

<u>Unit</u>	<u>Unit Type</u>	<u>Percentage of Interest</u>
	C-C	.231%
C606	C-B	.231%
C607	C-A	.213%
C608	C-A	.213%
C609	C-B	.231%
C610	C-C	.231%
C611	C-D	.209%
C612	C-D	.209%
C613	C-C	.231%
C614	C-B	.231%
C615	C-A	.213%
C616		
C701	C-A	.213%
C702	C-B	.231%
C703	C-C	.231%
C704	C-D	.209%
C705	C-D	.209%
C706	C-C	.231%
C707	C-B	.231%
C708	C-A	.213%
C709	C-A	.213%
C710	C-B	.231%
C711	C-C	.231%
C712	C-D	.209%
C713	C-D	.209%
C714	C-C	.231%
C715	C-B	.231%
C716	C-A	.213%
CU-1	Commercial	3.074%
CU-2	Commercial	7.742%
CU-3	Commercial	7.742%
CU-4	Commercial	7.742%
R	Retail	<u>8.500</u>
		100.00%

DB3552-0866