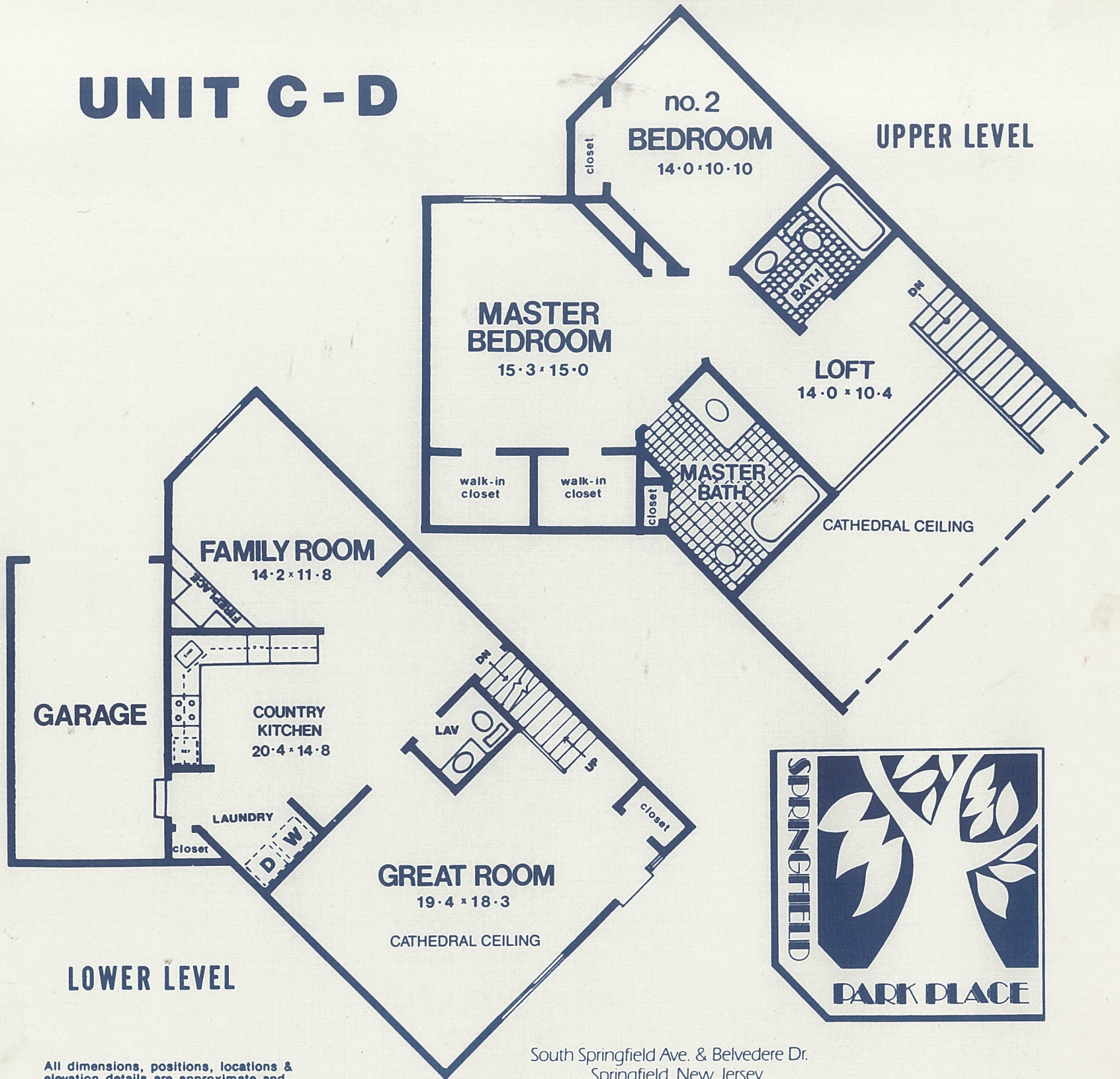


UNIT C-D

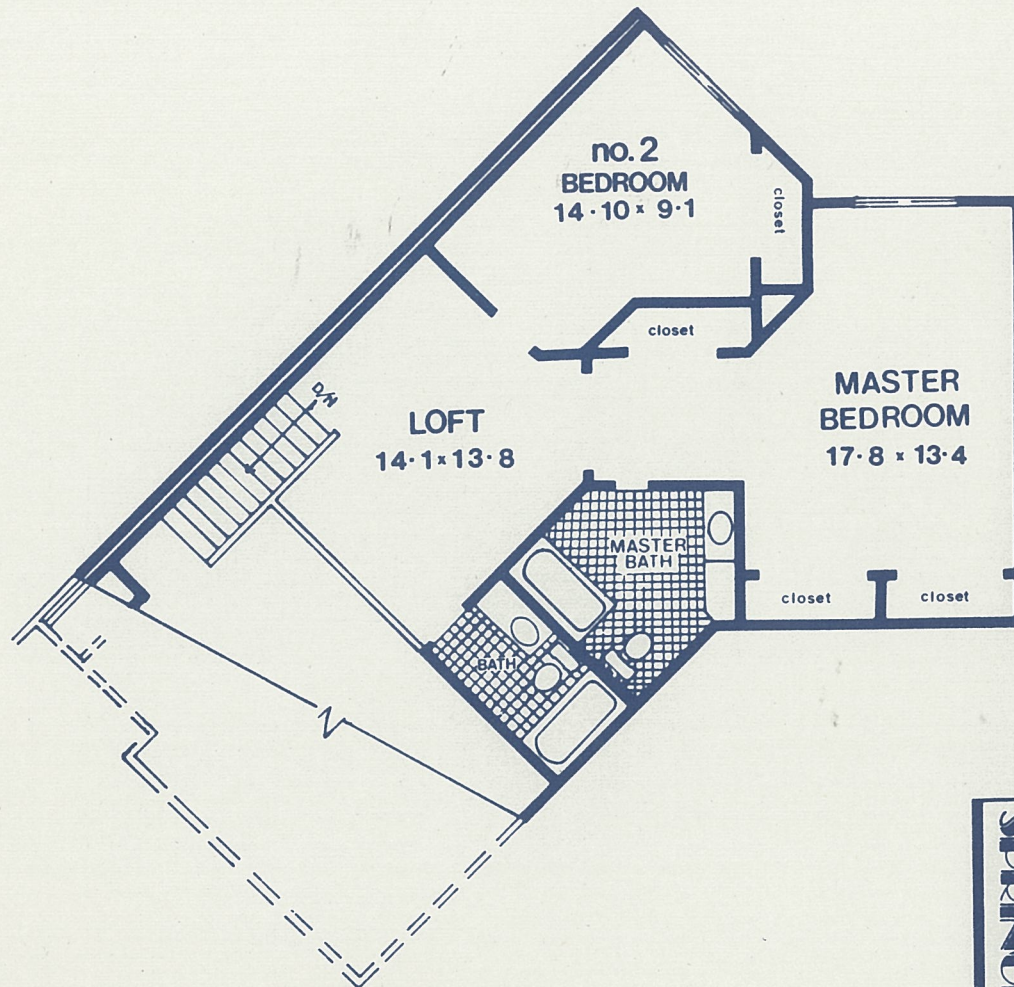


All dimensions, positions, locations & elevation details are approximate and subject to change without notice.

South Springfield Ave. & Belvedere Dr.
Springfield, New Jersey

(201) 379-5999

UNIT C-D



UPPER LEVEL



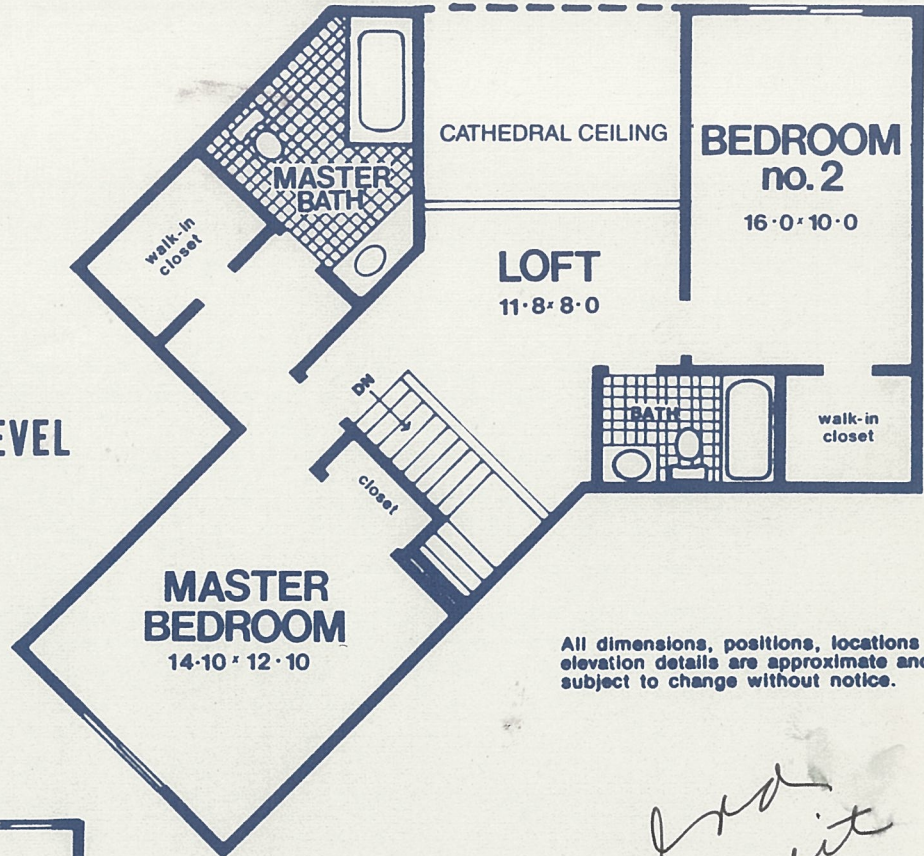
All dimensions, positions, locations & elevation details are approximate and subject to change without notice.

South Springfield Ave. & Belvedere Dr.
Springfield, New Jersey

(201) 379-5999

UNIT C-A

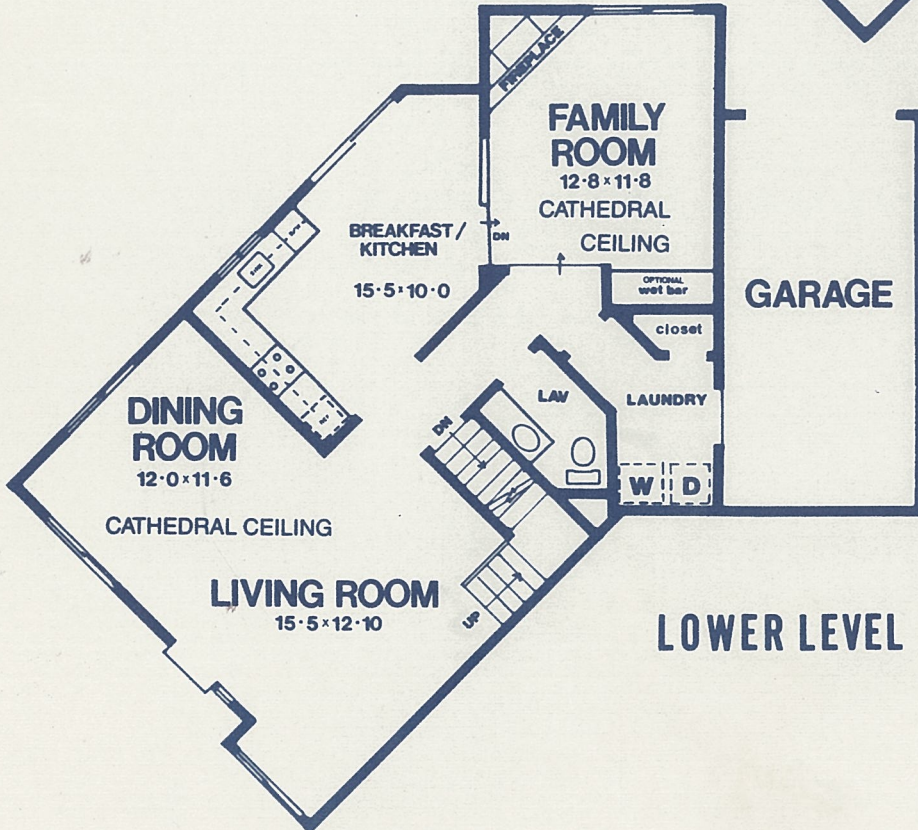
UPPER LEVEL



All dimensions, positions, locations & elevation details are approximate and subject to change without notice.

Good unit x

LOWER LEVEL

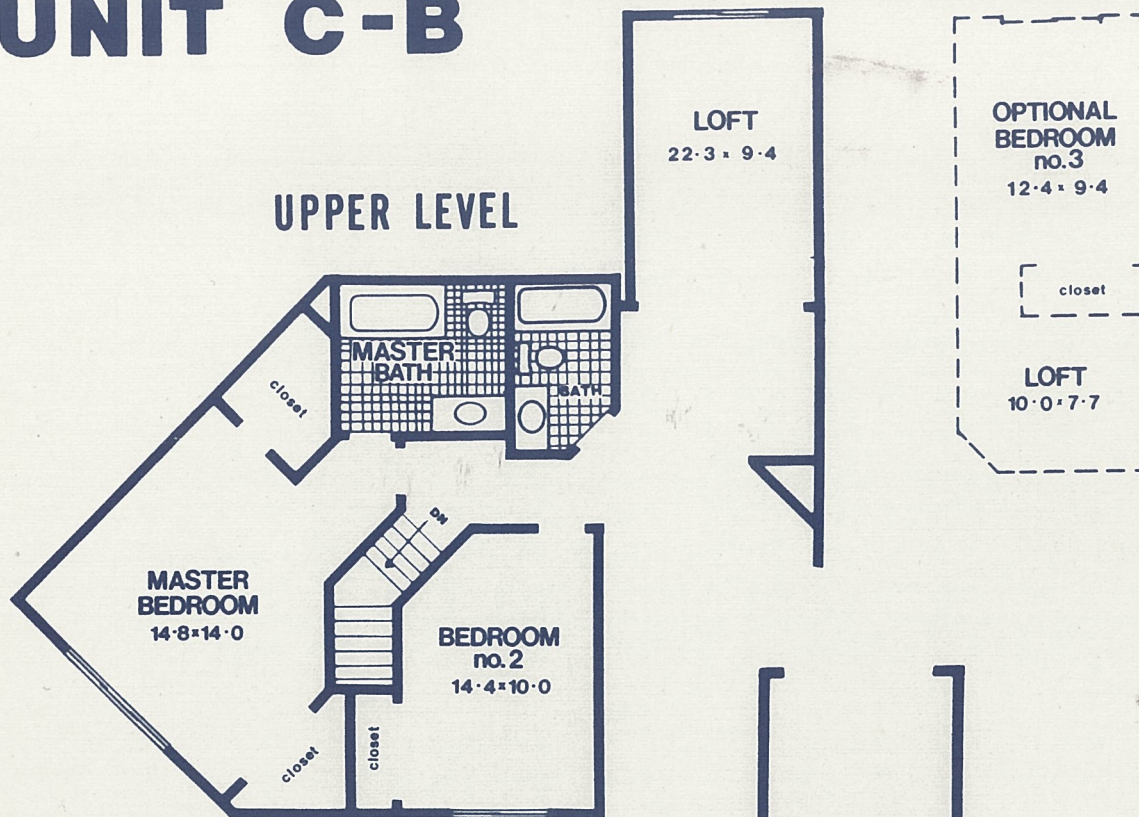


South Springfield Ave. & Belvedere Dr.
Springfield, New Jersey

(201) 379-5999

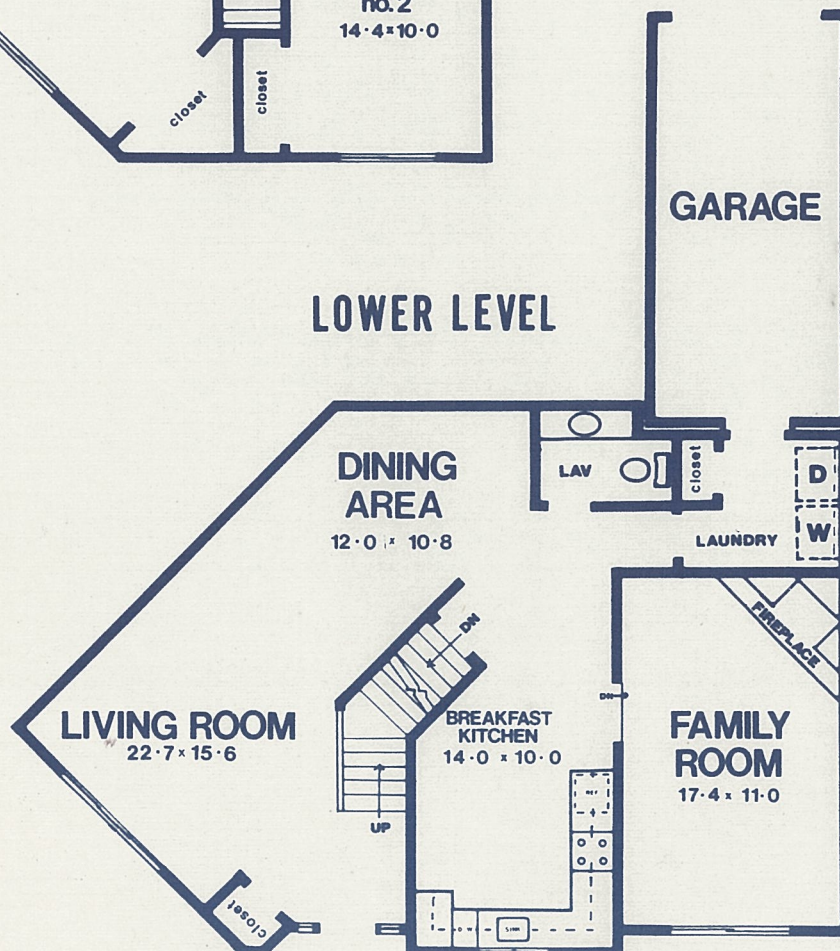
UNIT C-B

UPPER LEVEL



All dimensions, positions, locations & elevation details are approximate and subject to change without notice.

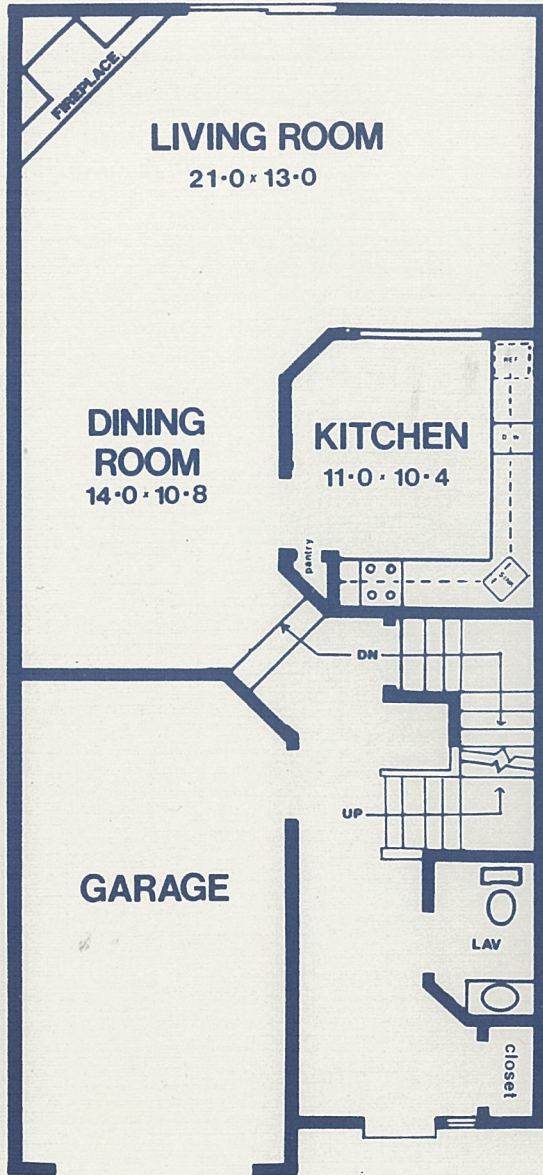
LOWER LEVEL



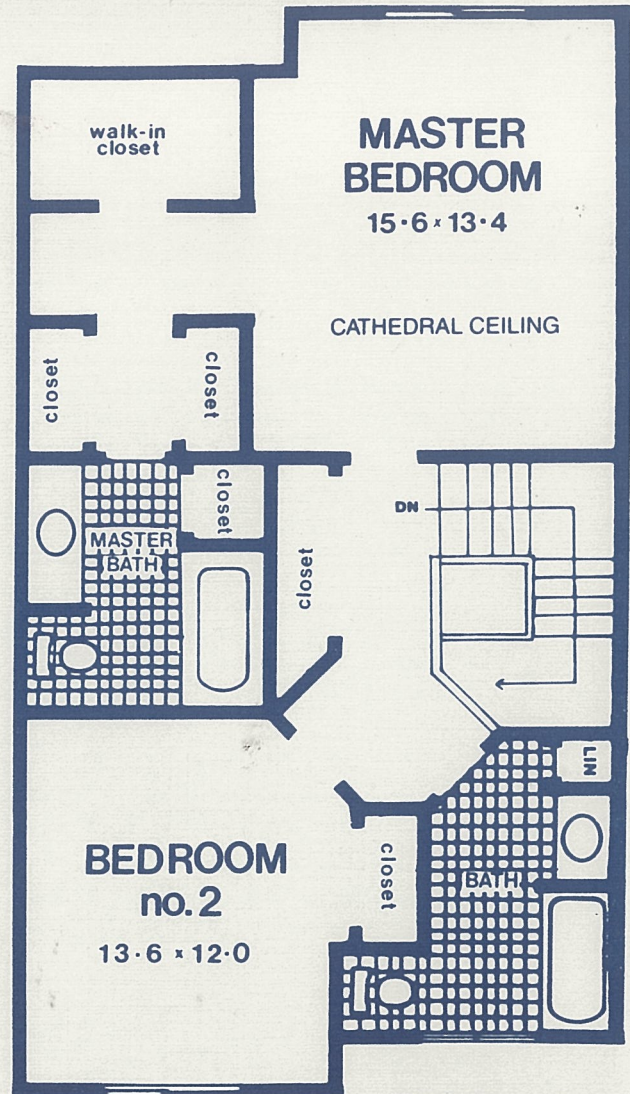
South Springfield Ave. & Belvedere Dr.
Springfield, New Jersey

(201) 379-5999

UNIT B



LOWER LEVEL



UPPER LEVEL

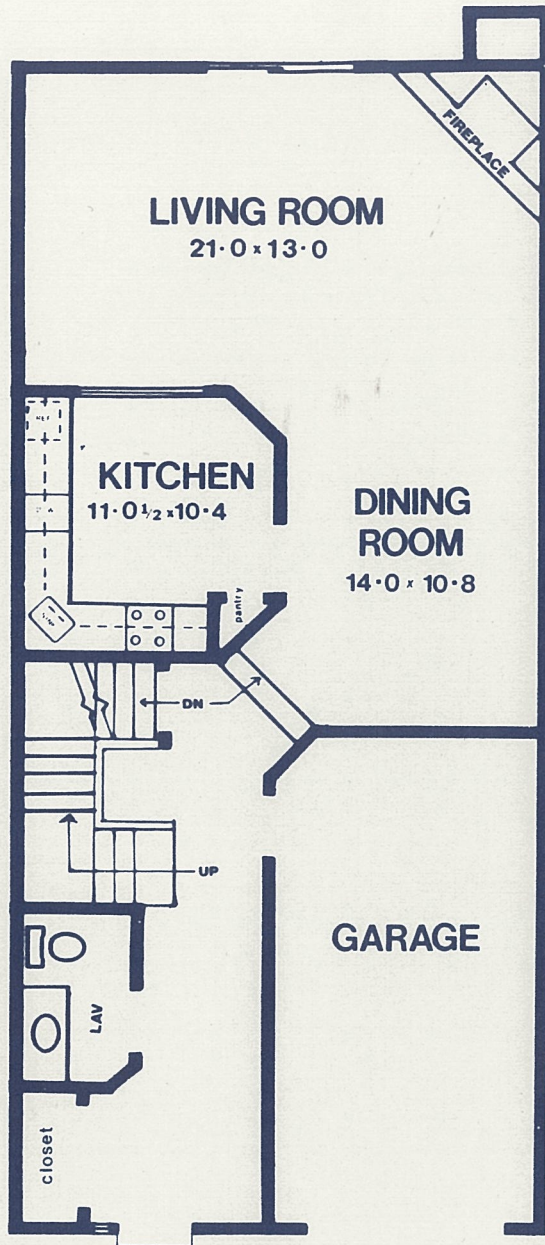


South Springfield Ave. & Belvedere Dr.
Springfield, New Jersey

(201) 379-5999

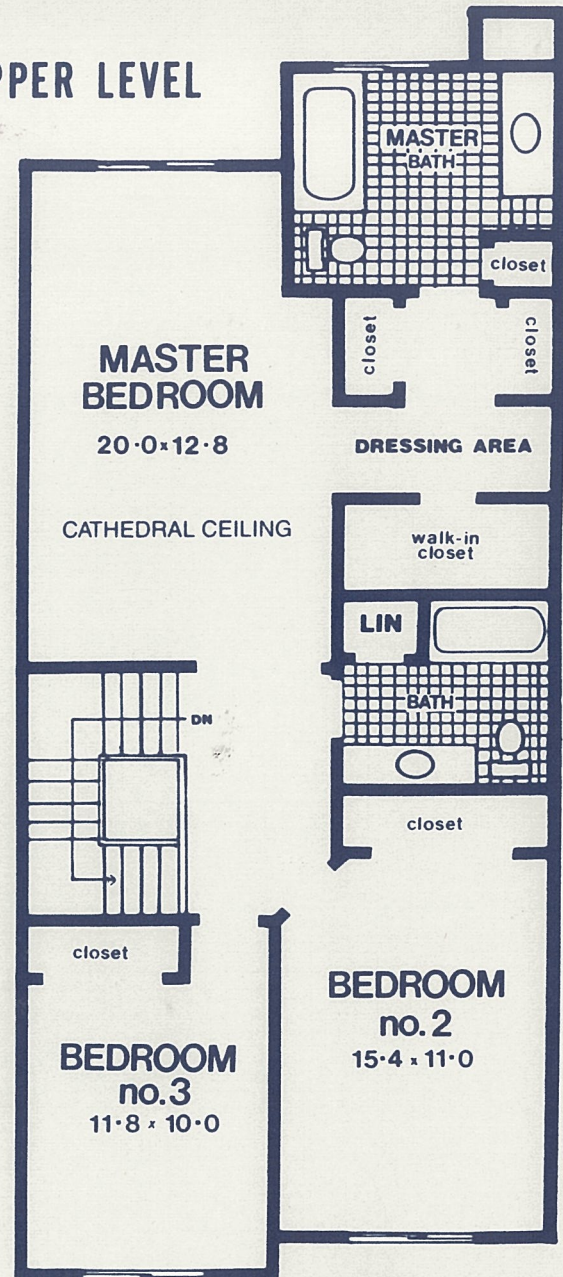
All dimensions, positions, locations & elevation details are approximate and subject to change without notice.

UNIT C



LOWER LEVEL

UPPER LEVEL

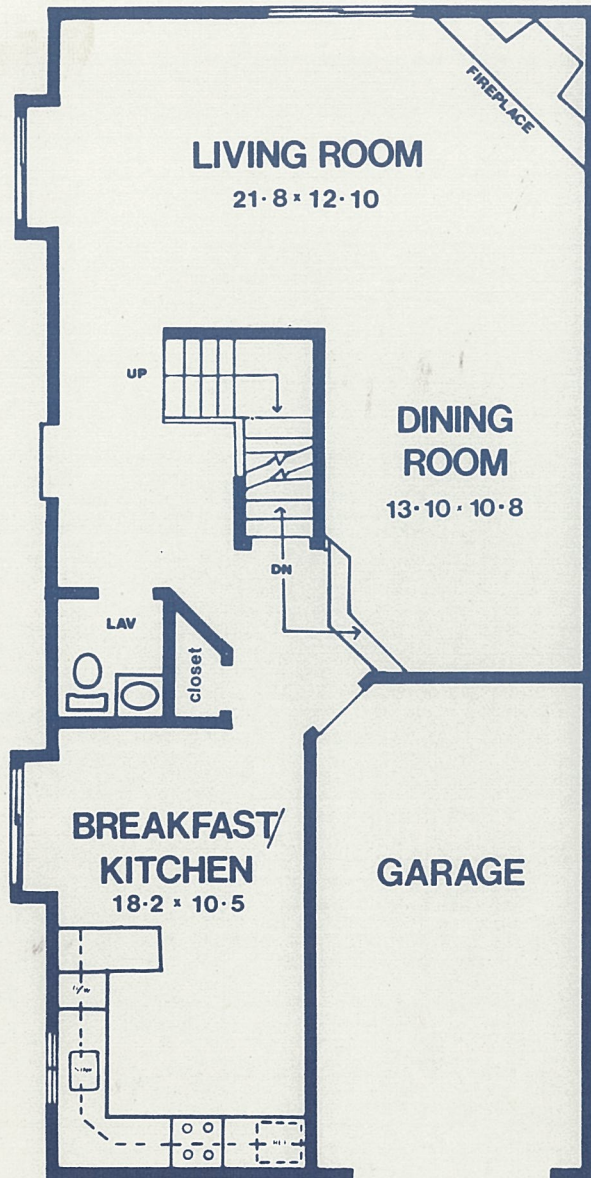


All dimensions, positions, locations & elevation details are approximate and subject to change without notice.

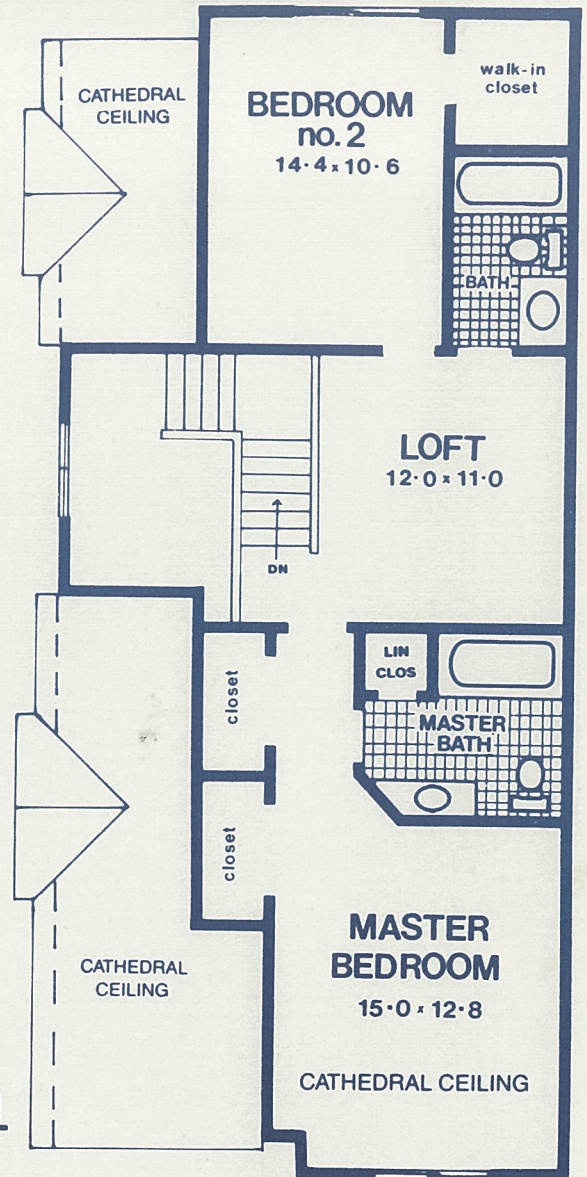
South Springfield Ave. & Belvedere Dr.
Springfield, New Jersey
(201) 379-5999



UNIT A



LOWER LEVEL



UPPER LEVEL

All dimensions, positions, locations & elevation details are approximate and subject to change without notice.

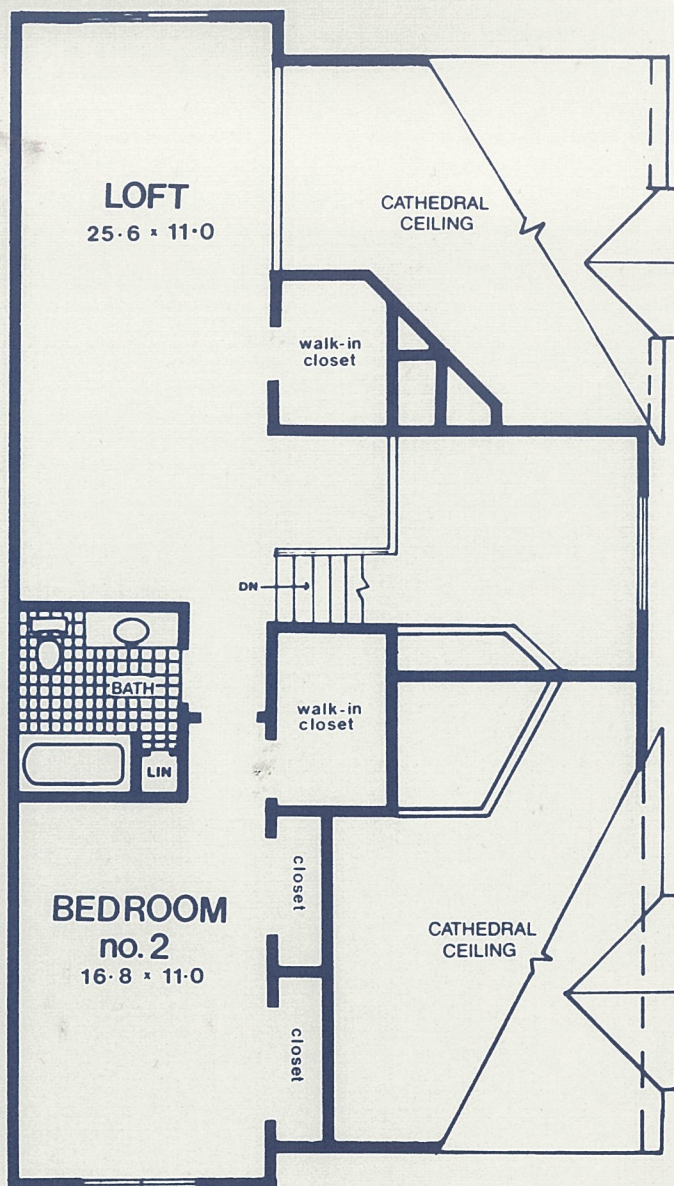
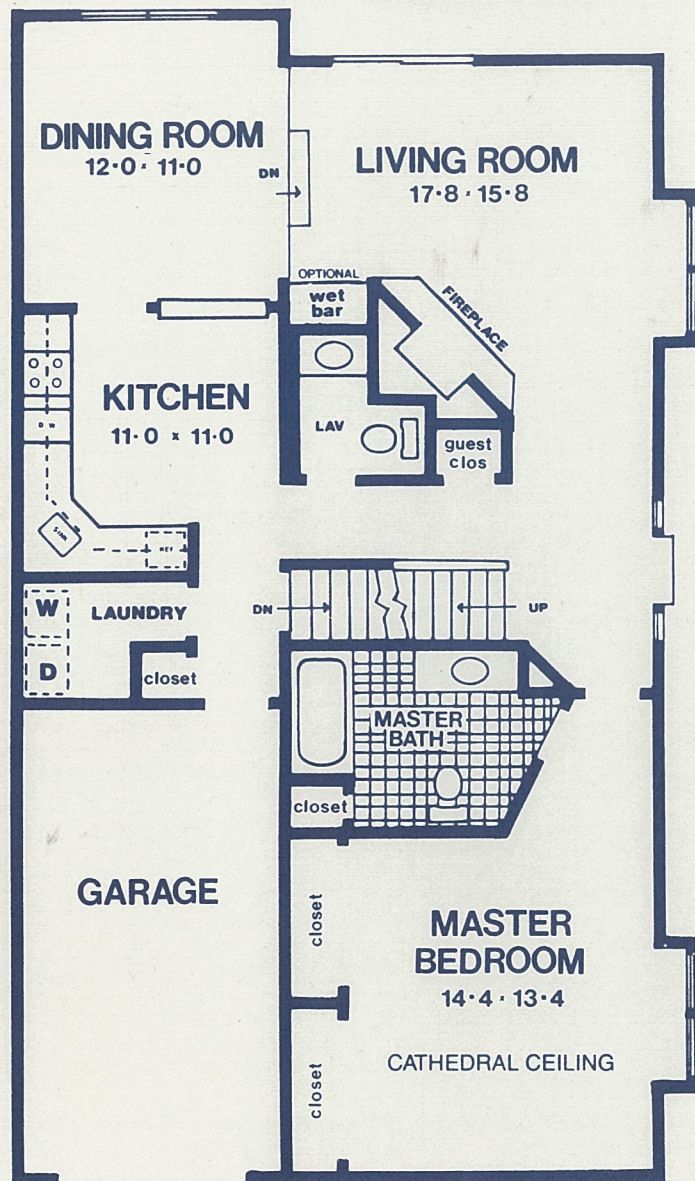
South Springfield Ave. & Belvedere Dr.
Springfield, New Jersey

(201) 379-5999



UNIT D

LOWER LEVEL



UPPER LEVEL



South Springfield Ave. & Belvedere Dr.
Springfield, New Jersey

(201) 379-5999

All dimensions, positions, locations & elevation details are approximate and subject to change without notice.



Townhouse Living at its best!!!

Springfield Park Place is located in Union County. The township of Springfield is nestled at the foot of the Watchung Mountains and bounded by seven municipalities: Union, Kenilworth, Cranford, Westfield, Summit, Mountainside and Millburn.

Springfield Park Place offers distinctive models, exclusively designed to meet every requirement and taste. Although each townhouse varies in appeal, all share one important characteristic: an uncommon dedication to quality craftsmanship as evidenced by the fine custom touches.

Our unique development of beautiful townhouses is within a ten minute drive of the Short Hills Mall and Saks Fifth Avenue, ranking equal to the finest shopping in New York. Other shopping malls are readily available including Echo Plaza just off Route 22.

Springfield Park Place offers its residents easy access to both the Metropolitan area and southern suburbs via Interstate Highway 78, Routes 22 or 24 and the Garden State Parkway in nearby Union Township. For those who prefer public transportation, air conditioned buses and trains are easily accessible.

The fine community of Springfield and its surrounding area offers superior educational, cultural and recreational facilities, various houses of worship as well as Senior Citizen services.

Our townhouses have been specifically planned to provide the utmost in luxury, beauty and convenience. Those viewing our models will find more than just a townhouse; they will discover a home where one's family can live today... and grow tomorrow.

QUALITY FEATURES

- Economical Gas Forced Warm Air Heating
- Central Air Conditioning
- 2 and 3 Bedrooms and Large Family Room in Cluster Units
- Ranch Plus Model: Master Bedroom on First Floor with Optional Third Bedroom
- 2 1/2 Bathrooms (Optional Full Bath in Basement)
- Optional Whirlpool, Stall Shower, Pedestal Sink and Bidet in Master Bath
- Full Basements and Sewer Line Under Basement Floor
- Color Coordinated G.E. Appliances
- Gas Range and Dishwasher
- Washer and Dryer Hook-up on First Floor (See Salesperson)
- European Style Formica Cabinets and Vanities (Optional Wood Cabinets)
- Stainless Steel Kitchen Sink
- Ceramic Tiles in Master and Main Baths
- Optional Skylights
- Optional Single Lever Faucets
- Optional Alarms and Vacuum System
- Optional Wet Bar Hook-up
- Carpeting Throughout (Optional Oak Flooring)
- Wood Burning Fireplaces
- Oak Wood Railings
- One Car Garage plus On-Site Parking
- T.V. Outlets Prepared for Cable
- Telephone Outlets
- Wood Exterior Decks or Concrete Patios (Subject to Finished Grade)
- Stucco and Cedar Siding Exteriors
- Swimming Pool and Tennis Court
- Underground Utilities
- Underground Sprinkler System
- Smoke Detectors
- Insulated Glass Windows and Patio Doors (Optional Storm Panels)
- Cultured Stone Planters
- Dimensional Roof Shingles
- Full Thick Insulation



Plot Plan

